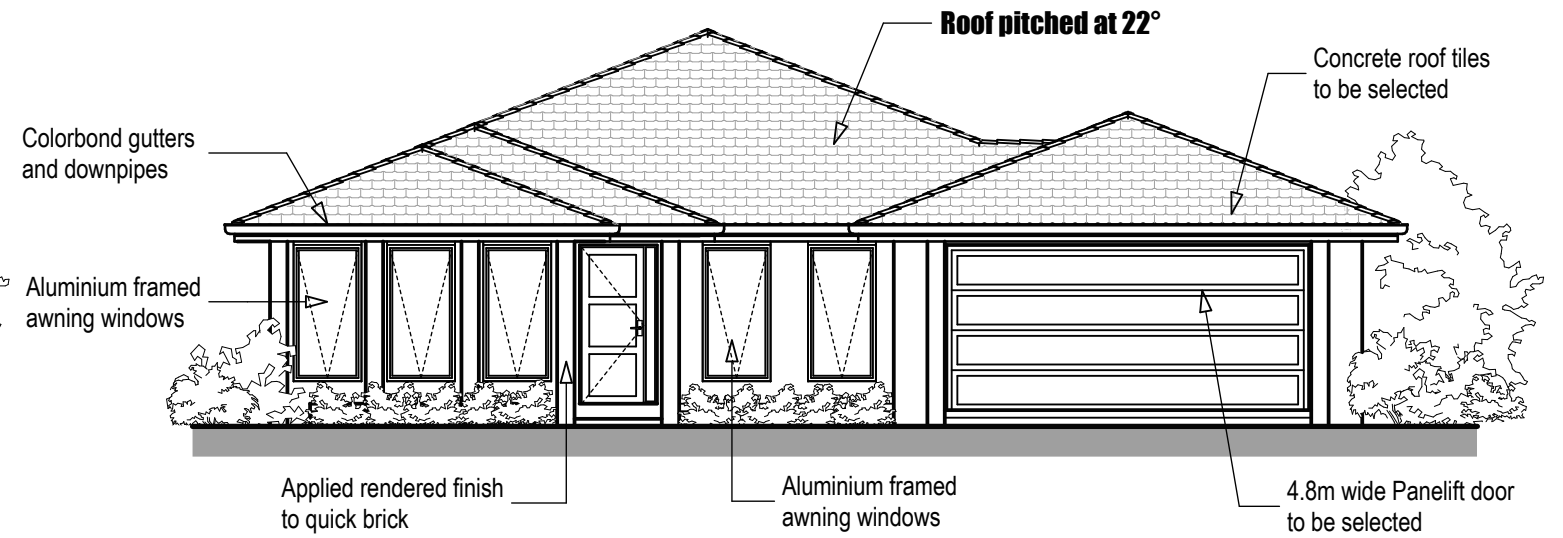
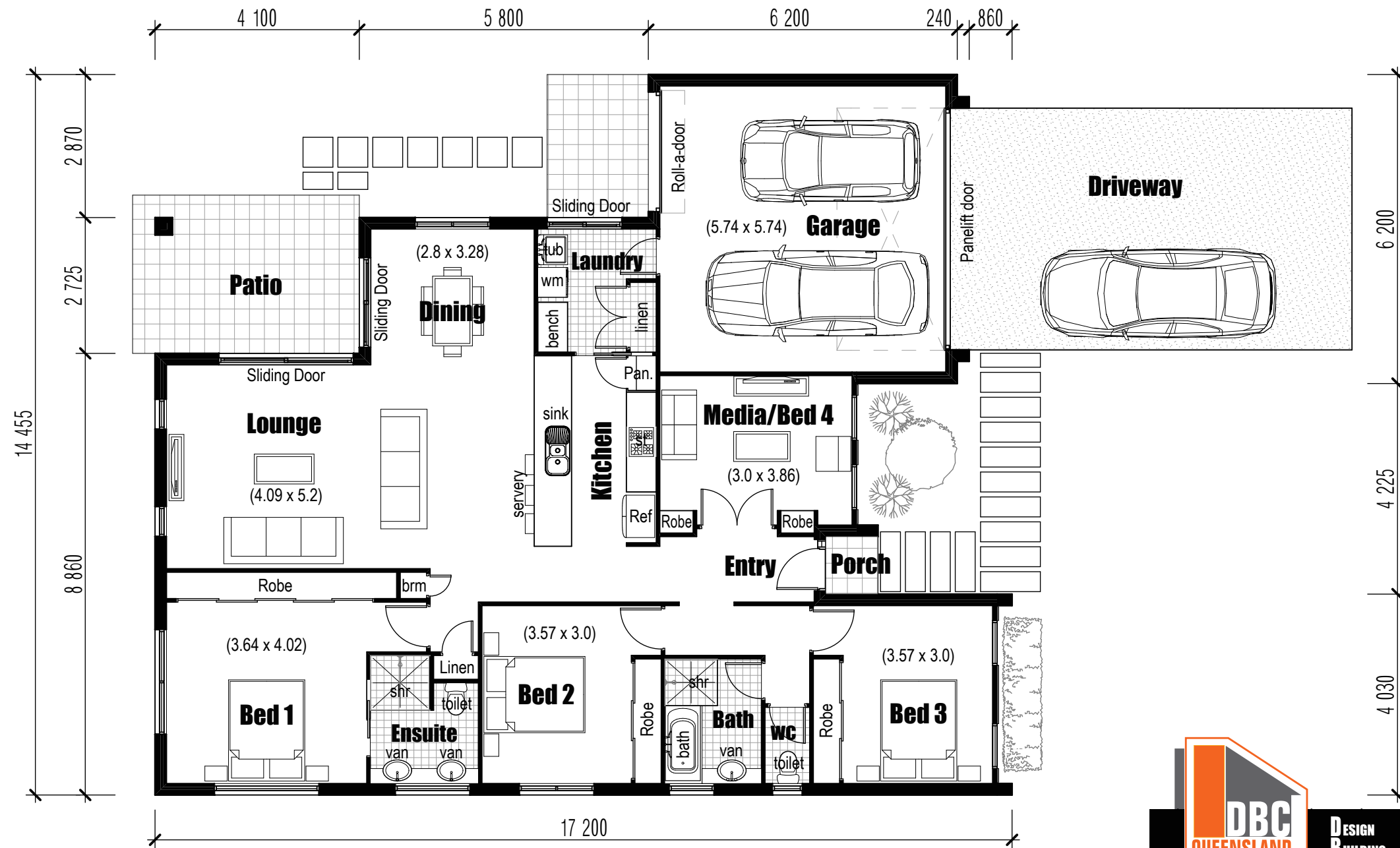


**Elevation**  
**(Option 1)**



**Elevation**  
**(Option 2)**



Floor Area	
. Garage	37.25
. Ground Floor	150.34
. Patio	11.17
. Porch	1.21
<b>TOTAL</b>	<b>199.97 m<sup>2</sup></b>

**Floor Plan**  
**Monza 200**



**DESIGN  
BUILDING  
CONSTRUCTION**

PO Box 1030 Paradise Point 4216  
Phone: 0438 881 208  
Fax: 07 5564 1088  
www.dbcql.com.au