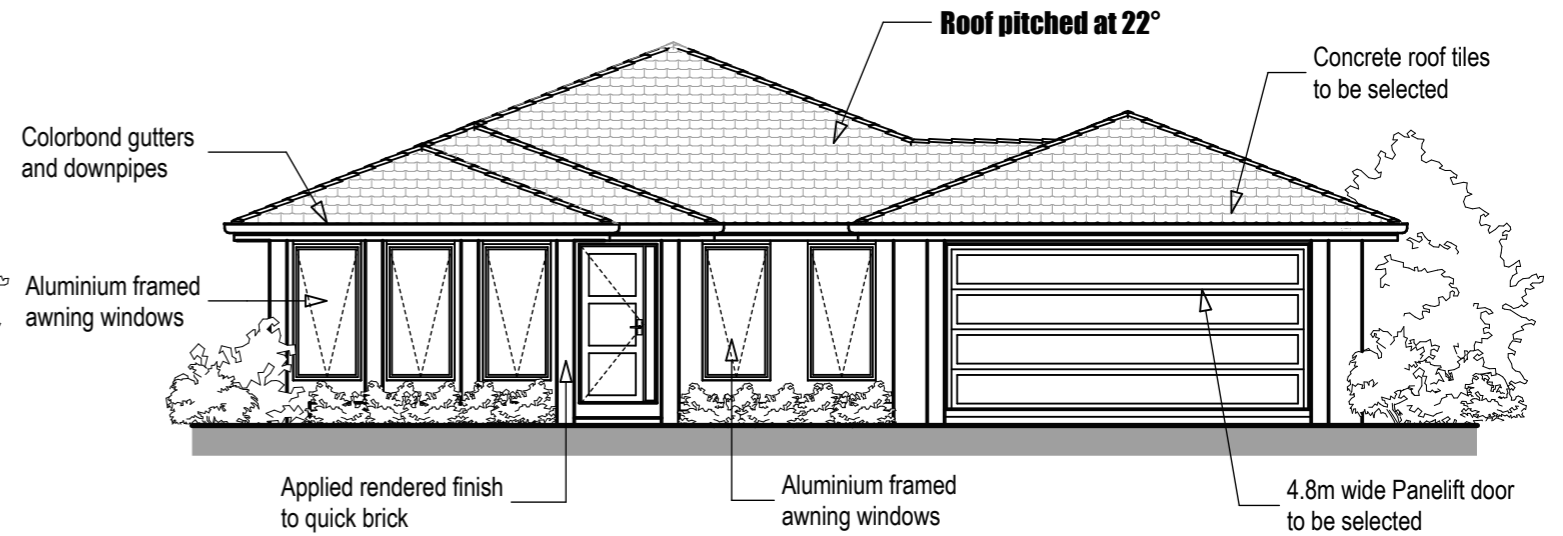
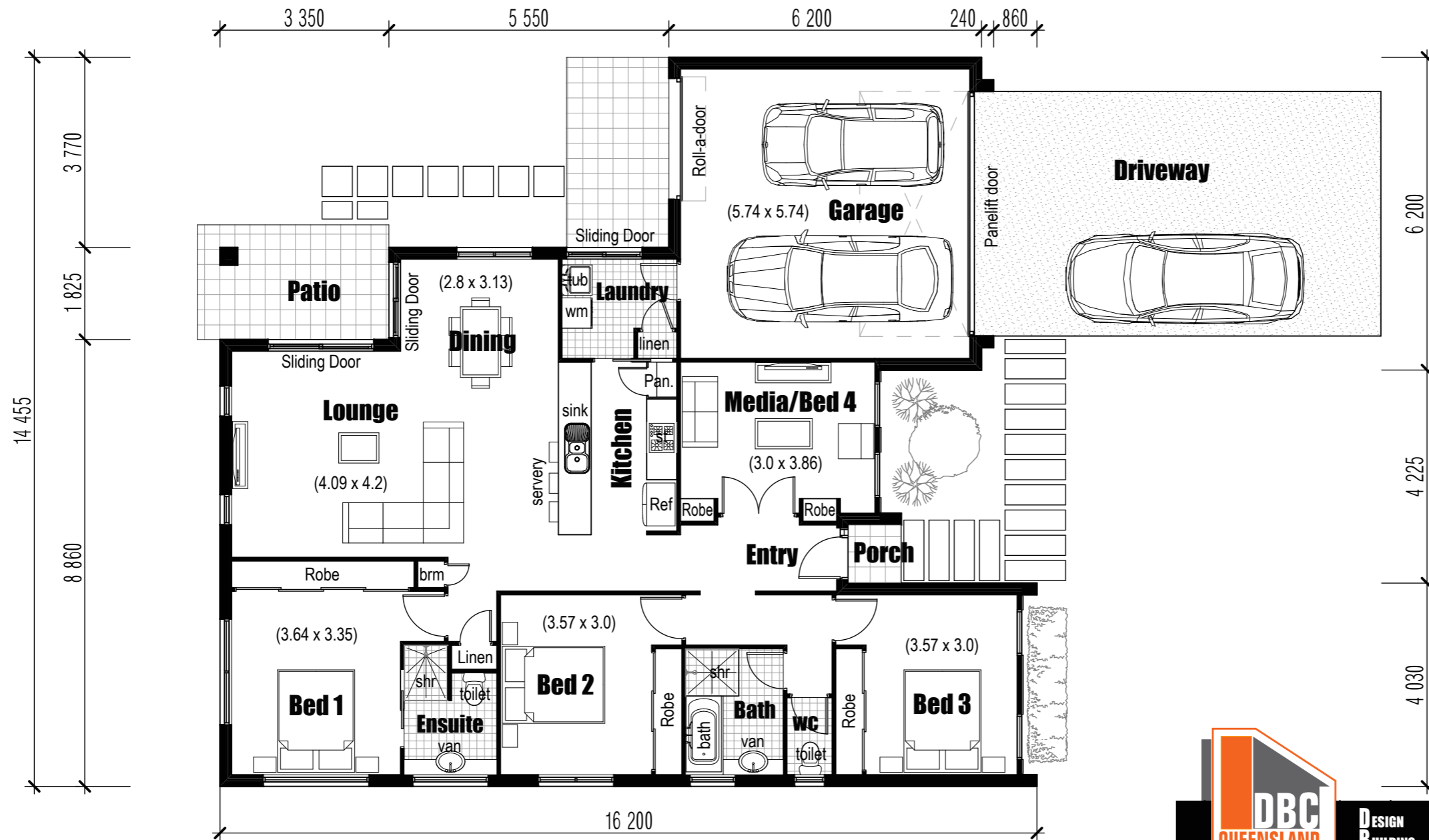


**Elevation
(Option 1)**



**Elevation
(Option 2)**



Floor Area	
. Garage	37.69
. Ground Floor	135.44
. Patio	6.11
. Porch	1.21
TOTAL	180.45 m²

**Floor Plan
Monza 180**



**DESIGN
BUILDING
CONSTRUCTION**

PO Box 1030 Paradise Point 4216
Phone: 0438 881 208
Fax: 07 5564 1088
www.dbcql.com.au